

# Top 10

---

Ten reasons customers choose SAP HANA®  
to help transform their business.



1

---

## Speed

Manage massive data volume at high speeds

2

---

## Agility

Enable real-time interactions across your value chain

3

---

## Any Data

Gain insights from structured and unstructured data

4

---

## Insight

Unlock new insights with predictive, complex analysis

5

---

## Applications

Run next-generation applications

6

---

## Cloud

Step up to one of the world's most advanced cloud platforms

7

---

## Innovation

Deploy the ultimate platform for business innovation

8

---

## Simplicity

Manage fewer layers and a simpler landscape for lower costs

9

---

## Value

Innovate without disruption and add value to legacy investments

10

---

## Choice

Work with your preferred partners at every layer

# Top 10

1  
Speed

2  
Agility

3  
Any Data

4  
Insight

5  
Applications

6  
Cloud

7  
Innovation

8  
Simplicity

9  
Value

10  
Choice

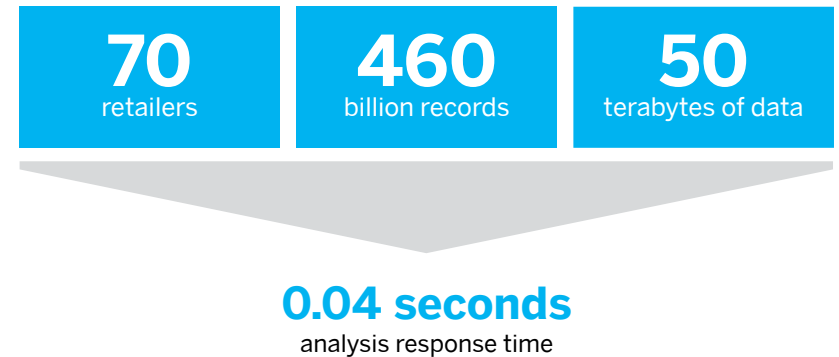
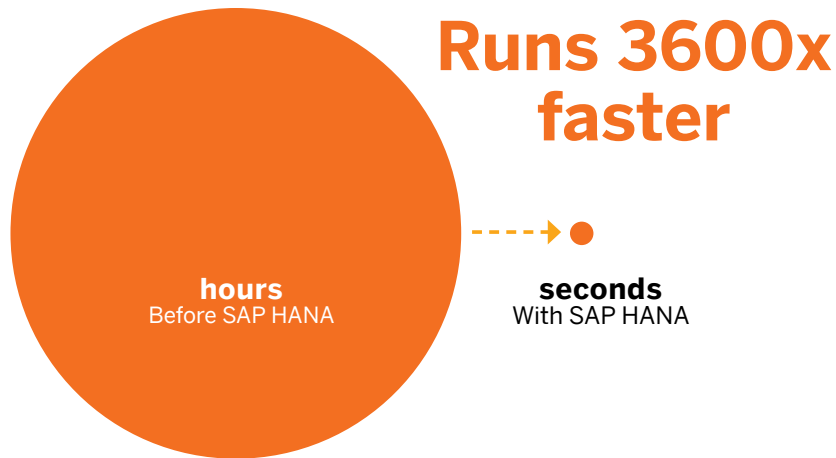
## Manage massive data volume at high speeds.

### SAP HANA® SAP in-memory computing technology

The SAP HANA platform is the engine of the real-time enterprise. It provides a foundation on which to build a new generation of applications, enabling customers to analyze large quantities of data from virtually any source, in real time. Here's an example that showcases actual customer performance of a core reporting process.

### Experience the real-time enterprise in action

A live analysis of a consumer products company data reveals how SAP HANA analyzes current point-of-sale data in real time—empowering this organization to review segmentation, merchandising, inventory management, and forecasting information at the speed of thought.



**on any device, anywhere, anytime**



Now and in the future, speed is the key to adapting to an ever-changing business environment. The speed SAP HANA enables is sudden and significant, and has the potential to transform entire business models.

*Akihiko Nakamura, Corporate Senior Vice President, Nomura Research Institute*

**Source** Customer results may vary and will depend on system configuration. Left: Based on tests conducted by SAP with a construction industry customer's data from SAP Business Suite transactions. On an average, queries ran 3600X faster than on SAP Business Suite with traditional disk based databases. Results achieved with SAP HANA 1.0 with one 4-way, 8 core server (2.27 GHz clock speed) with 0.5 TB of Main Memory, 2 TB of SSD storage, 1Gb Ethernet running on an open source operating system. Right: Based on tests conducted by SAP with 460 billion rows of point-of-sale data provided by a leading consumer products customer. Results achieved on a typical business query with SAP HANA 1.0 with 10 nodes. Each node consists of one 4-way, 8 core server (2.27 GHz clock speed) with 0.5 TB of Main Memory, 2 TB of SSD storage, 10Gb Ethernet running on an open source operating system.

# Top 10

1  
Speed

2  
Agility

3  
Any Data

4  
Insight

5  
Applications

6  
Cloud

7  
Innovation

8  
Simplicity

9  
Value

10  
Choice

## SAP HANA makes transformational agility possible.



Pull up-to-the-minute data from multiple sources. Evaluate options to balance financial, operational, and strategic goals based on today's business.



Rapidly analyze the impact of short-term supply and demand fluctuations and last-minute orders. Replan for optimal execution.



Quickly analyze consumer sentiment and promotion effectiveness. Target digital media offers to specific consumers in real time.



Rationalize large volumes of point-of-sales and channel data to gain insights into inventory movement. Run your business with an understanding of daily demand.

**Enable real-time interactions across your value chain.**



The SAP HANA appliance enables organizations to analyze their business operations using huge volumes of detailed operational data in real time, while business is happening.

*"IDC White Paper, sponsored by SAP AG, Faster, Higher, Stronger: In-Memory Computing Disruption and What SAP Means for Your Organization", November 2011*

# Top 10

1  
Speed

2  
Agility

3  
Any Data

4  
Insight

5  
Applications

6  
Cloud

7  
Innovation

8  
Simplicity

9  
Value

10  
Choice

## Gain insights from structured and unstructured data.

### Dig deeper to uncover new insights

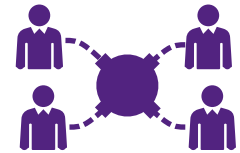
SAP HANA integrates structured and unstructured data from internal and external sources, and can work on detailed data without aggregations. SAP HANA can be integrated into a wide range of enterprise environments, allowing it to handle data from Oracle databases, Microsoft SQL Server, and IBM DB2.



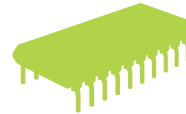
**Enterprise Applications:  
SAP and Other Providers**



**Text**



**Social Media**



**Machine Data**



**External Content**



Having grown both organically and through acquisitions of plants and companies across Eastern Europe, we needed a powerful solution to help us reign in and make sense of that information. Because SAP HANA can process huge amounts of data from any source, it was the right solution for us.

*Piotr Majewski, IT Manager, Central European Distribution Corporation*

# Top 10

1  
Speed

2  
Agility

3  
Any Data

4  
Insight

5  
Applications

6  
Cloud

7  
Innovation

8  
Simplicity

9  
Value

10  
Choice

## Unlock new insights with predictive, complex analysis.

### Before SAP HANA, analytics meant...

... preconfigured dashboards based on fixed business requirements

... long wait times to produce custom reports

... reactive views and an inability to define future expectations

### With SAP HANA, you can ...



#### Ask any question

Quickly and easily create ad-hoc views without needing to know the data or query type. Formulate your actions based on deep insights.



#### Get fast answers

Receive quick reactions to newly articulated queries. Rapidly innovate your processes and business models to outpace the competition.



#### Plan and predict

Enable state-of-the-art, interactive analyses such as simulations and pattern recognition – harness big data for targeted actions.



“Prior to SAP HANA, we were unable to run full analytics in a reasonable timeframe. With SAP HANA, we will be able to run analytics at a local level on specific brands and locations, and at the lowest level of detail in real time.”

Tom Greene, CIO, Colgate-Palmolive Company

# Top 10

1  
Speed

2  
Agility

3  
Any Data

4  
Insight

5  
Applications

6  
Cloud

7  
Innovation

8  
Simplicity

9  
Value

10  
Choice

## Run next-generation applications.

### Benefits today



#### Analyze your profitability

Use the processing power of SAP HANA to enable real-time profitability reporting.



#### Plan your workforce

Gain immediate and flexible insights into workforce composition and dynamics.



#### Segment your customers

Analyze and segment massive volumes of customer data at unparalleled speeds.



**SAP HANA delivers a new class of real-time applications and analytics to businesses of any size.**

### And tomorrow

SAP HANA will be the next-generation platform for applications, analytic content, and accelerators in targeted industries and lines of business.

# Top 10

1  
Speed

2  
Agility

3  
Any Data

4  
Insight

5  
Applications

6  
Cloud

7  
Innovation

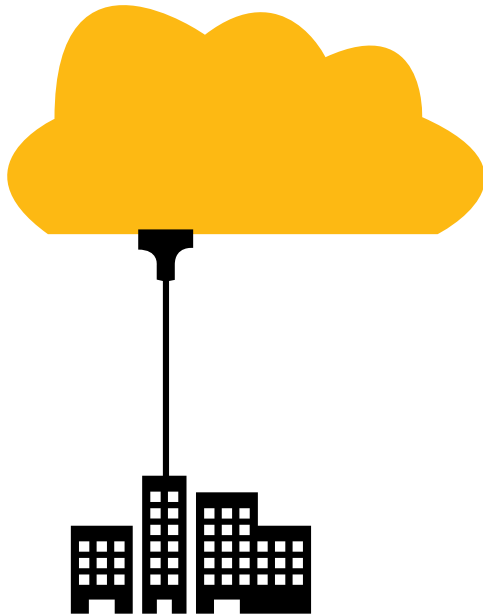
8  
Simplicity

9  
Value

10  
Choice

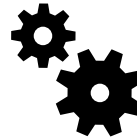
## Step up to one of the world's most advanced clouds.

**SAP HANA powers our next-generation enterprise cloud.**



### Fast

A single-location stack removes latency – enabling real-time collaboration, processing, and planning.



### Scalable

A highly robust cloud service allows quick deployment of current and next generation applications, scaled to your business needs.



### Secure

We secure your data through the entire cloud solution with independently audited standards of data security and governance.



# Top 10

1  
Speed

2  
Agility

3  
Any Data

4  
Insight

5  
Applications

6  
Cloud

7  
Innovation

8  
Simplicity

9  
Value

10  
Choice

## The ultimate platform for business innovation.

### Our platform – your imagination

SAP HANA is an early innovator for in-memory computing. Its configurability, easy integration, and revolutionary capabilities make it flexible enough for virtually anything your business requires.

Real companies  
are innovating  
with SAP HANA  
today

#### Energy management



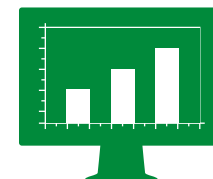
Utility companies use SAP HANA to process and analyze vast amounts of data generated by smart meter technology, improving customers' energy efficiency, and driving sustainability initiatives.

#### Real-time transit routing



SAP HANA is helping research firms calculate optimal driving routes using real-time GPS data transmitted from thousands of taxis.

#### Software piracy detection and prevention



Tech companies use SAP HANA to analyze large volumes of complex data to gain business insights into software piracy, develop preventive strategies, and recover revenue.



In-memory technology can be applied to any decision type, in any line of business, and in any industry.

*"IDC White Paper, sponsored by SAP AG, Faster, Higher, Stronger: In-Memory Computing Disruption and What SAP Means for Your Organization", November 2011*

# Top 10

1  
Speed

2  
Agility

3  
Any Data

4  
Insight

5  
Applications

6  
Cloud

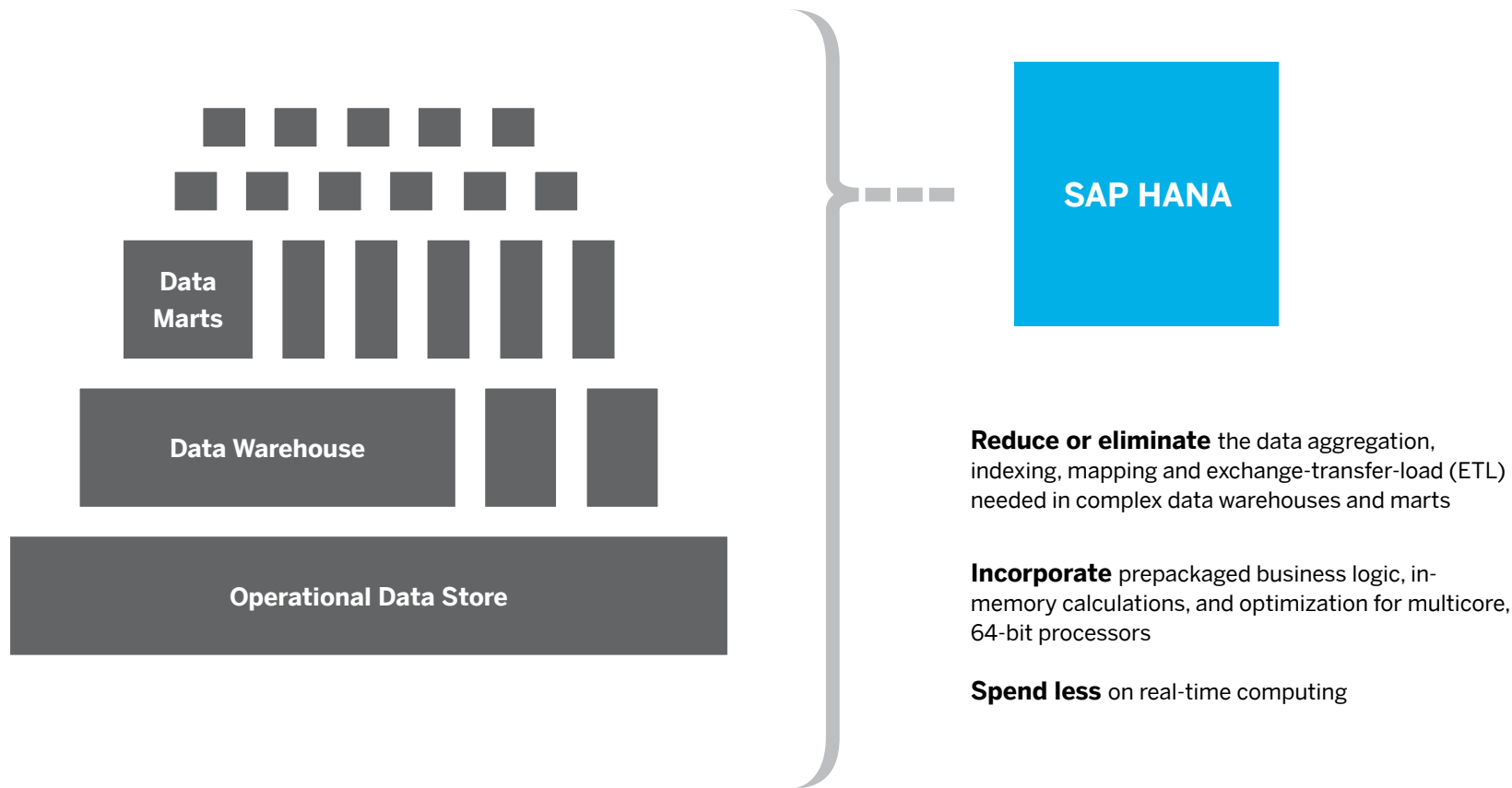
7  
Innovation

8  
Simplicity

9  
Value

10  
Choice

## Fewer layers, simpler landscape, lower cost.



## Achieve successful business outcomes.

SAP HANA's unique capabilities make it possible to optimize your business in ways previously unimaginable.

Real-time reporting and speed-of-thought analysis will help you capture incremental revenue and realize cost savings, adding real value to your business.

### SAP HANA can help you unlock value



#### Optimize revenue sources

Adapt your business to real-time trends: SAP HANA's in-memory technology allows you to adjust your product mix and placement based on actual sales and inventory data so you can maximize sales opportunities and cut out-of-stock events.



#### Microtarget offers

Reach customers more efficiently: SAP HANA makes it possible to analyze offer uptake within hours after launch in order to take rapid, corrective actions to maximize customer revenue and customer wallet share.



#### Plan and forecast confidently

Plan your business better: SAP HANA's real-time operational reporting gives continuous visibility into company-wide spending patterns, helping you forecast business needs, maximize cost savings and reduce supplier risk.



Access to consistent real-time data will improve our forecasting abilities as well as provide intelligence on how to redirect the business as needed based on recent events, customer relationships, product plans and market variations.

CN Ram, CIO, Essar Group,

# Top 10

1  
Speed

2  
Agility

3  
Any Data

4  
Insight

5  
Applications

6  
Cloud

7  
Innovation

8  
Simplicity

9  
Value

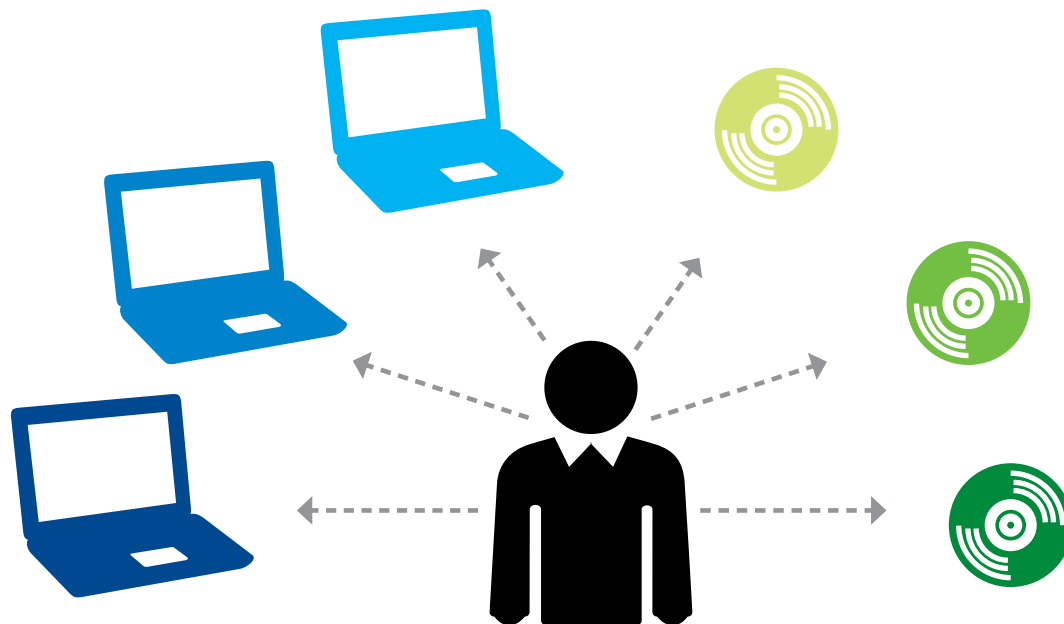
10  
Choice

## Choice at every layer to work with your preferred partners.

### Run on the hardware of your choice. Work with the software you prefer.

Collaboration with a number of partners means that SAP can complete the software stacks of our diverse customer base in configurations that make sense for their business.

Plus, a variety of different options means that you won't be locked in by a single provider.



The fact that it can run on standard, multiprocessor, multi-core systems means that the hardware costs for SAP HANA aren't just cheap, they are decreasing rapidly as the market for commodity RAM and Intel's multi-core processors just gets better.

*Joshua Greenbaum, Enterprise Applications Consulting, March 20, 2011*

# Top 10

## © 2012 SAP AG. All rights reserved

No part of this publication may be reproduced or transmitted in any form or for any purpose without the express permission of SAP AG. The information contained herein may be changed without prior notice.

Some software products marketed by SAP AG and its distributors contain proprietary software components of other software vendors.

Microsoft, Windows, Excel, Outlook, and PowerPoint are registered trademarks of Microsoft Corporation.

IBM, DB2, DB2 Universal Database, System i, System i5, System p, System p5, System x, System z, System z10, System z9, z10, z9, iSeries, pSeries, xSeries, zSeries, eServer, z/VM, z/OS, i5/OS, S/390, OS/390, OS/400, AS/400, S/390 Parallel Enterprise Server, PowerVM, Power Architecture, POWER6+, POWER6, POWER5+, POWER5, POWER, OpenPower, PowerPC, BatchPipes, BladeCenter, System Storage, GPFS, HACMP, RETAIN, DB2 Connect, RACF, Redbooks, OS/2, Parallel Sysplex, MVS/ESA, AIX, Intelligent Miner, WebSphere, Netfinity, Tivoli and Informix are trademarks or registered trademarks of IBM Corporation.

Linux is the registered trademark of Linus Torvalds in the U.S. and other countries.

Adobe, the Adobe logo, Acrobat, PostScript, and Reader are either trademarks or registered trademarks of Adobe Systems Incorporated in the United States and/or other countries.

Oracle is a registered trademark of Oracle Corporation.

UNIX, X/Open, OSF/1, and Motif are registered trademarks of the Open Group.

Citrix, ICA, Program Neighborhood, MetaFrame, WinFrame, VideoFrame, and MultiWin are trademarks or registered trademarks of Citrix Systems, Inc.

HTML, XML, XHTML and W3C are trademarks or registered trademarks of W3C®, World Wide Web Consortium, Massachusetts Institute of Technology.

Java is a registered trademark of Sun Microsystems, Inc.

JavaScript is a registered trademark of Sun Microsystems, Inc., used under license for technology invented and implemented by Netscape.

SAP, R/3, SAP NetWeaver, Duet, PartnerEdge, ByDesign, SAP BusinessObjects Explorer, StreamWork, and other SAP products and services mentioned herein as well as their respective logos are trademarks or registered trademarks of SAP AG in Germany and other countries.

Business Objects and the Business Objects logo, BusinessObjects, Crystal Reports, Crystal Decisions, Web Intelligence, Xcelsius, and other Business Objects products and services mentioned herein as well as their respective logos are trademarks or registered trademarks of Business Objects Software Ltd. Business Objects is an SAP company.

Sybase and Adaptive Server, iAnywhere, Sybase 365, SQL Anywhere, and other Sybase products and services mentioned herein as well as their respective logos are trademarks or registered trademarks of Sybase, Inc. Sybase is an SAP company.

All other product and service names mentioned are the trademarks of their respective companies. Data contained in this document serves informational purposes only. National product specifications may vary.

The information in this document is proprietary to SAP. No part of this document may be reproduced, copied, or transmitted in any form or for any purpose without the express prior written permission of SAP AG.

This document is a preliminary version and not subject to your license agreement or any other agreement with SAP. This document contains only intended strategies, developments, and functionalities of the SAP® product and is not intended to be binding upon SAP to any particular course of business, product strategy, and/or development. Please note that this document is subject to change and may be changed by SAP at any time without notice.

SAP assumes no responsibility for errors or omissions in this document. SAP does not warrant the accuracy or completeness of the information, text, graphics, links, or other items contained within this material. This document is provided without a warranty of any kind, either express or implied, including but not limited to the implied warranties of merchantability, fitness for a particular purpose, or non-infringement.

SAP shall have no liability for damages of any kind including without limitation direct, special, indirect, or consequential damages that may result from the use of these materials. This limitation shall not apply in cases of intent or gross negligence.

The statutory liability for personal injury and defective products is not affected. SAP has no control over the information that you may access through the use of hot links contained in these materials and does not endorse your use of third-party Web pages nor provide any warranty whatsoever relating to third-party Web pages.